

# 3566 FALCON CRESCENT



**EXCLUSIVE  
NEIGHBOURHOOD**

3  
BEDROOMS

2.5  
BATHROOMS

2,128 SQ. FT.  
RESIDENCE

5,876 SQ. FT.  
LOT

# PANORAMIC MOUNTAIN VIEWS



Located in the exclusive Blueberry Hill neighbourhood, this residence offers panoramic mountain views that encircle its elevated positioning. Custom millwork compliments the well-appointed post and beam home offering living over three floors including 3 bedrooms, family room plus ample outdoor space to entertain across 2 decks. With close access to the Valley Trail brings recreation to your door whether you seek out the close amenities of the village or the evergreens of the alpine, there are few properties that offer the connectivity you'll find here.



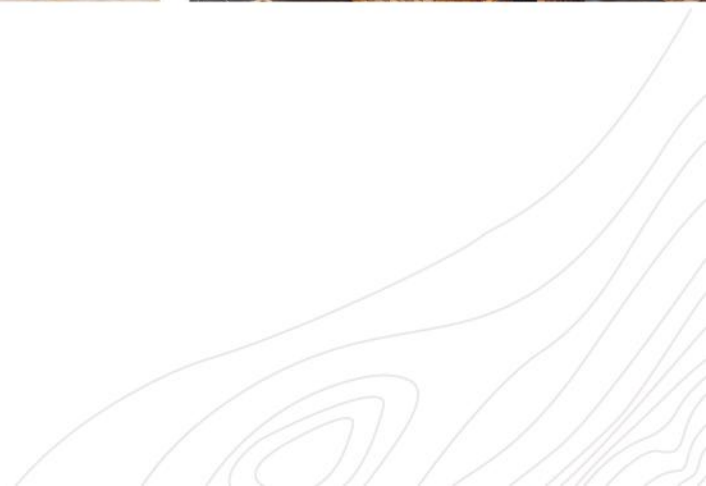


HOT TUB WITH VIEWS

PANORAMIC MOUNTAIN  
VIEWS WITH AMPLE  
ENTERTAINMENT SPACE

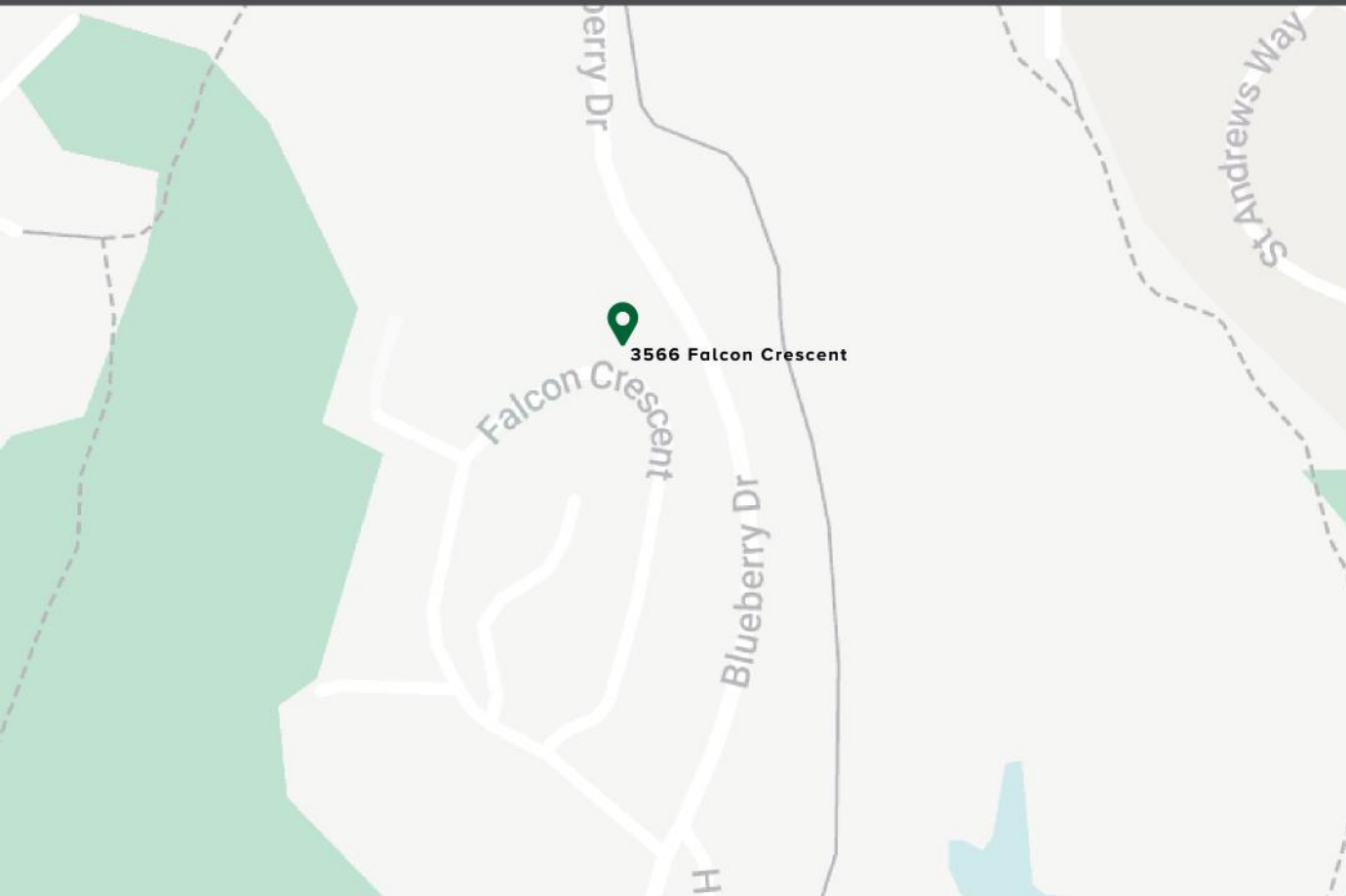


LOWER FAMILY ROOM





# ACCESS TO ALL



## ALTA LAKE NEARBY

Easy access to Alta Lake's Blueberry Docks and Lakeside Park.



## MOUNTAIN VIEWS

Panoramic mountain views that encircle its elevated position.



## WALK TO VILLAGE

Walking distance to Whistler Village

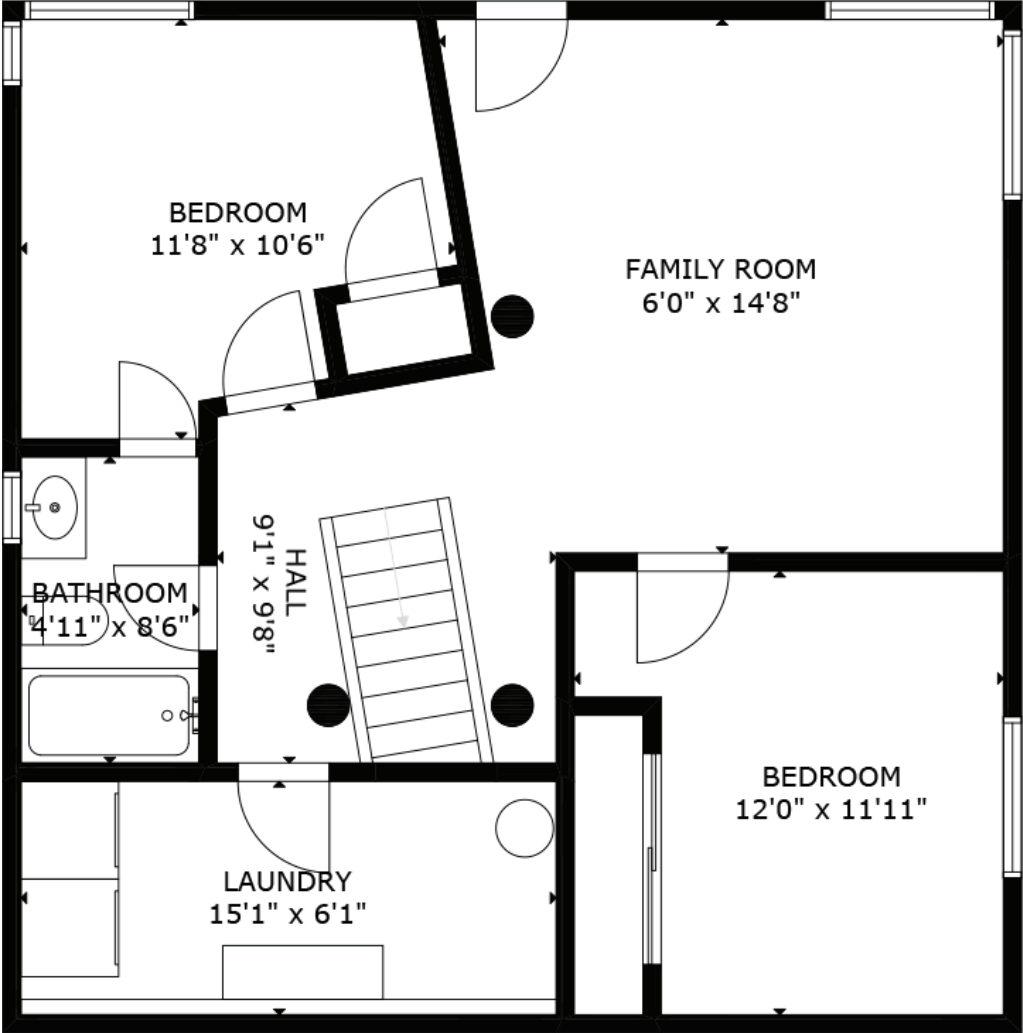


## BIKING & HIKING TRAILS

Quick and convenient access to a multitude of Whistler's best trail networks including Valley Trail.

# 3566 FALCON CRESCENT

LOWER FLOOR

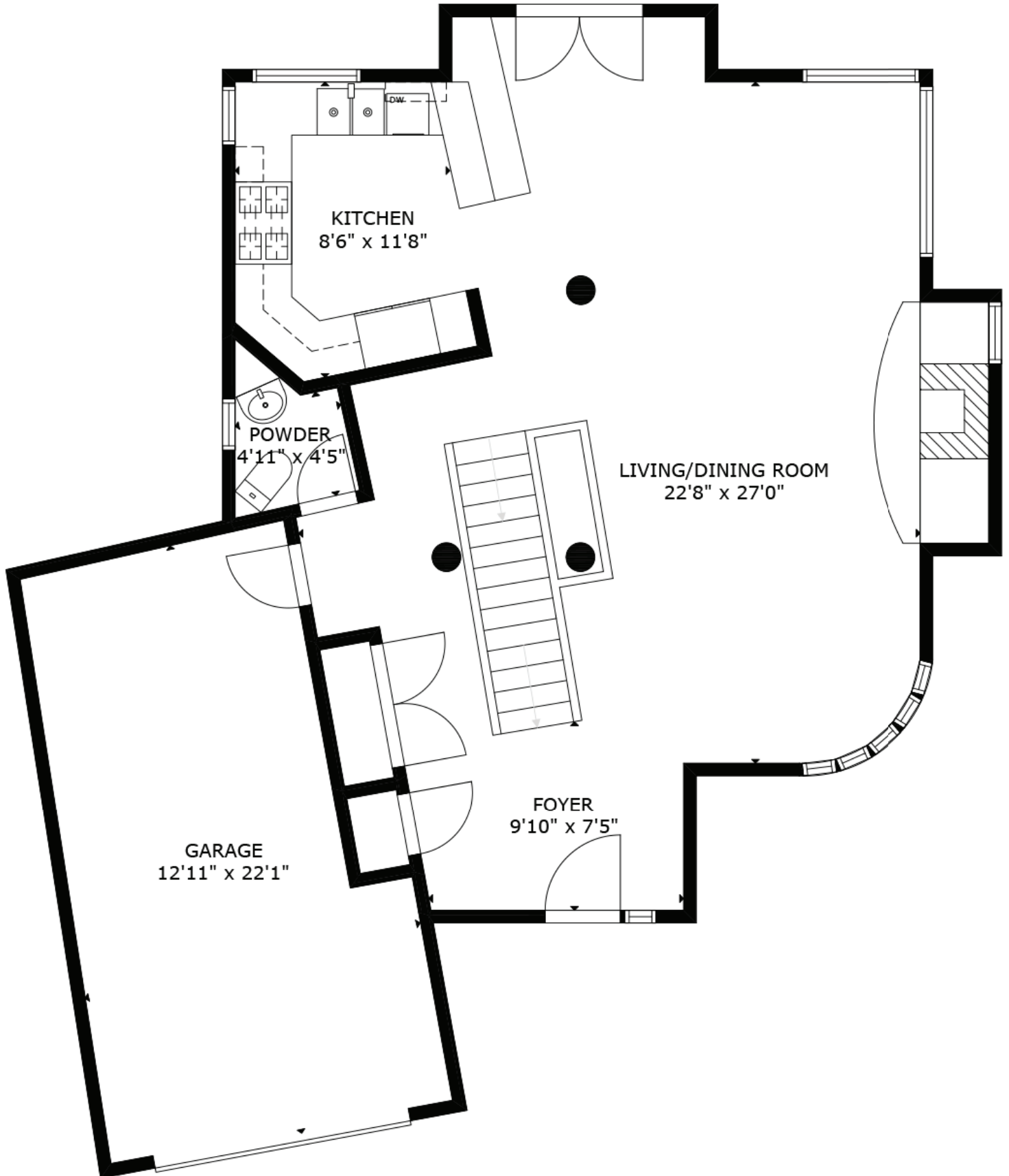


MEASUREMENT ARE APPROXIMATE, ACTUALS MAY VARY. MEASUREMENTS MAY INCLUDE NON-CONFORMING SPACE.



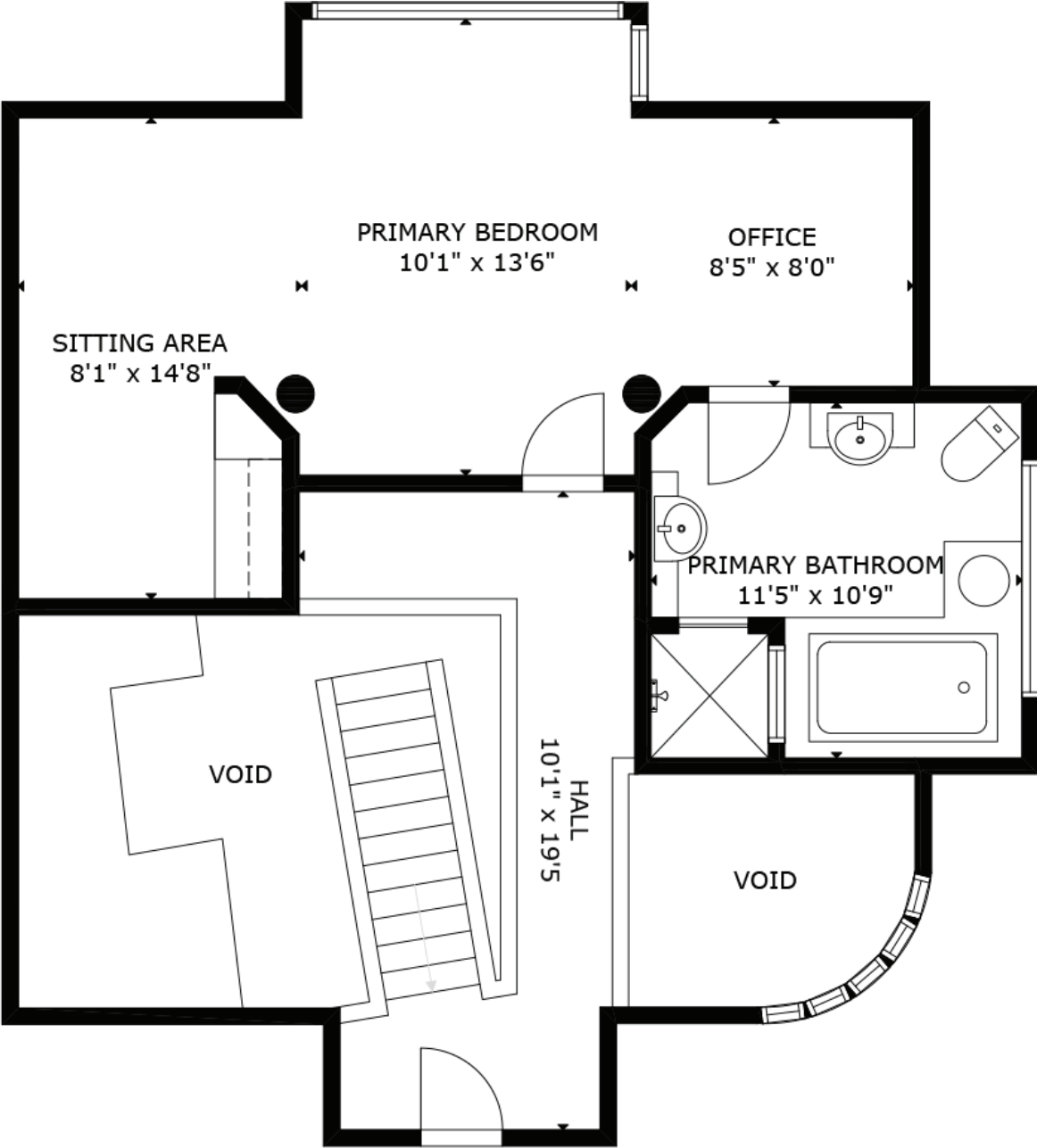
# 3566 FALCON CRESCENT

MAIN FLOOR



# 3566 FALCON CRESCENT

UPPER FLOOR



MEASUREMENT ARE APPROXIMATE, ACTUALS MAY VARY. MEASUREMENTS MAY INCLUDE NON-CONFORMING SPACE.