

# 6677 CRABAPPLE DRIVE



**SOUGHT-AFTER  
NEIGHBOURHOOD**

5  
BEDROOMS

3,498 SQ.FT.  
RESIDENCE

4.5  
BATHROOMS

12,443 SQ.FT.  
LOT



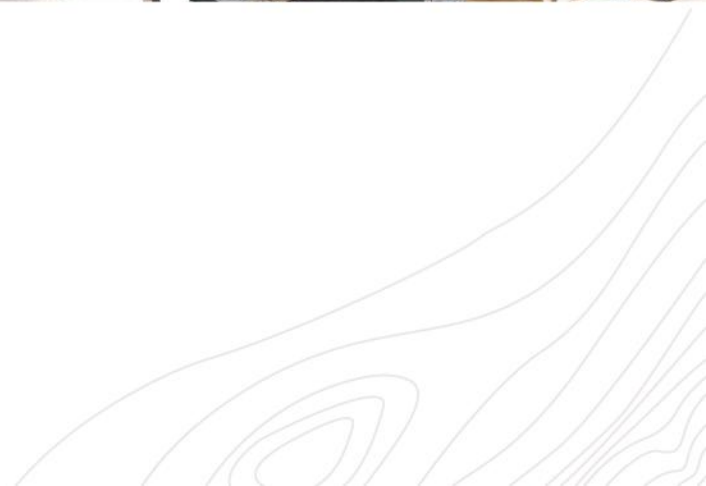
# CONTEMPORARY DESIGN



Merging contemporary design and quality craftsmanship this residence offers the best of Whistler living, all within walking distance to Whistler Village and nestled in the popular Whistler Cay Heights neighbourhood.

At the heart of this home, the main living area offers great connectivity between an expansive chef's kitchen and casual eating area, spacious formal dining area, living room and media room, creating modern yet practical spaces for family living. With five bedrooms throughout, the upper-level master bedroom offers a walk out balcony, large walk-in closet, and luxurious, spa-like bathroom. A large, landscaped garden with hot tub also offers an ideal place to enjoy with friends and family any season.









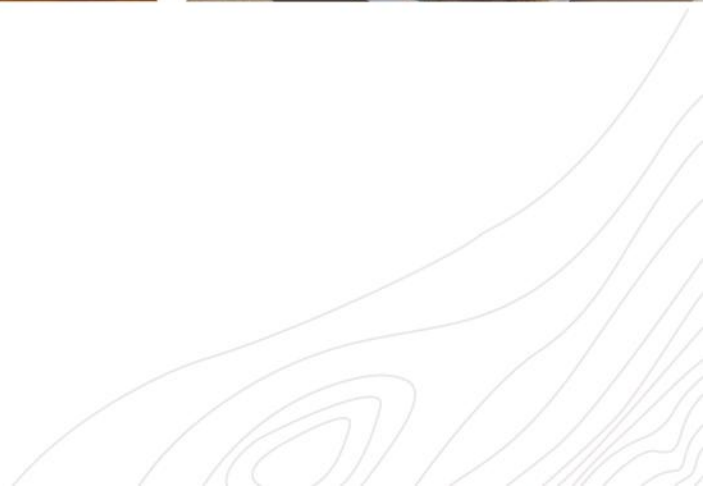
EXPANSIVE CHEFS KITCHEN

PRIMARY BEDROOM WITH  
COZY FIREPLACE

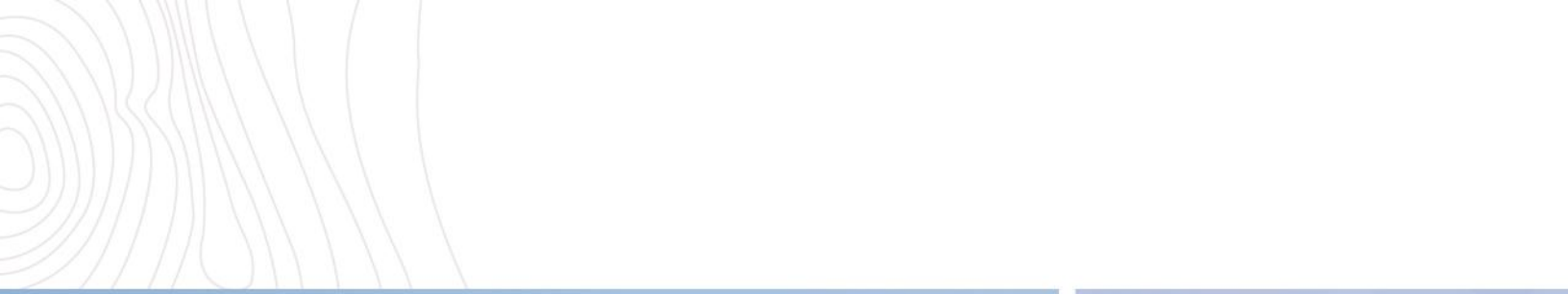


PRIMARY BEDROOM'S SPA-LIKE  
ENSUITE

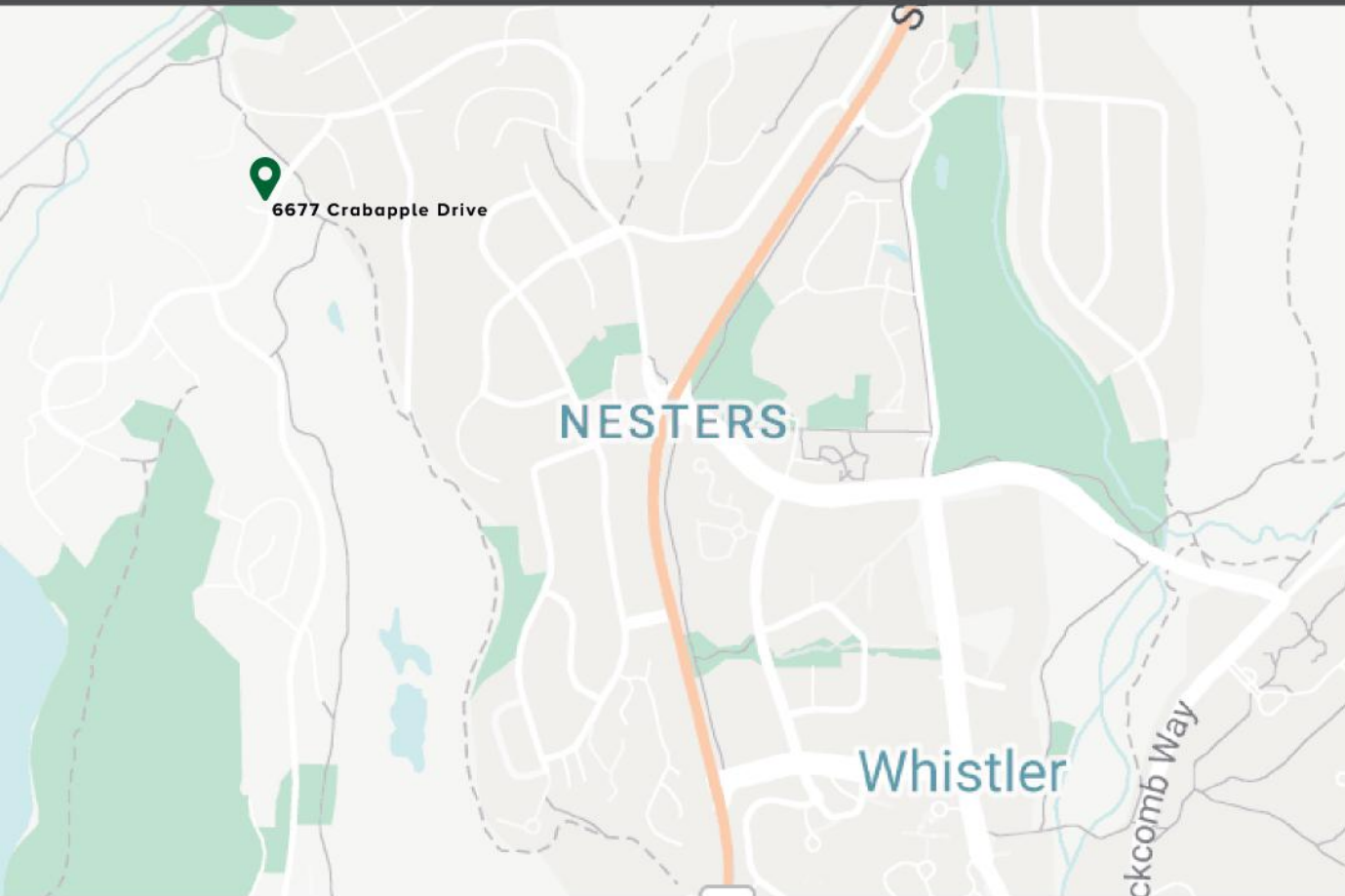








# ACCESS TO ALL



## POPULAR NEIGHBOURHOOD

Located in the popular Whistler Cay Heights neighbourhood with schools & parks nearby.



## BIKING TRAILS

Quick and convenient access to a multitude of Whistler's best trail network including Valley Trail.



## WALK TO VILLAGE

A short walk to Whistler Village via Whistler's Valley Trail network.



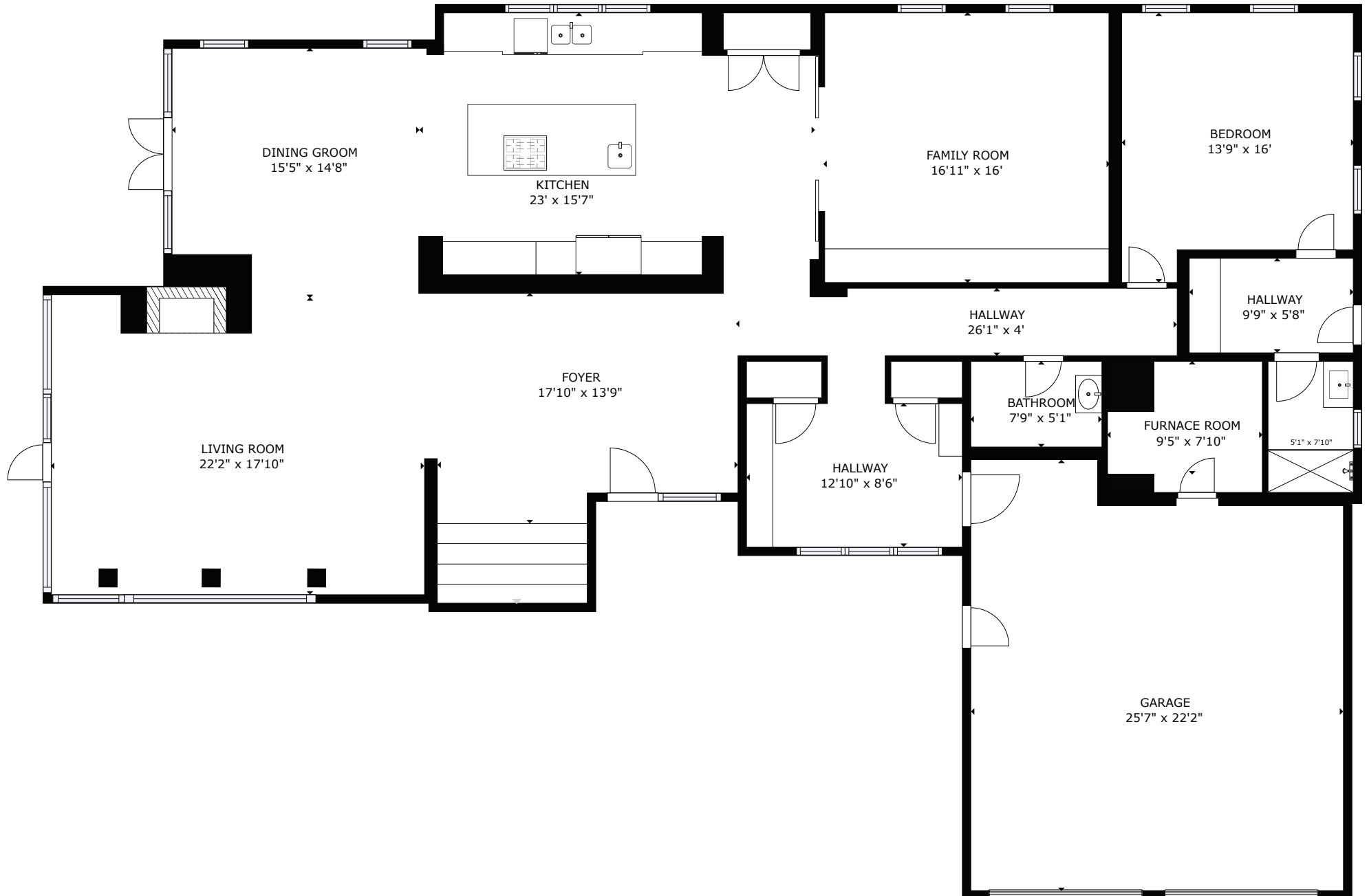
## LAKES & PARKS

Easy access to Alta Lake and golf course



# 6677 CRABAPPLE DRIVE

## MAIN FLOOR

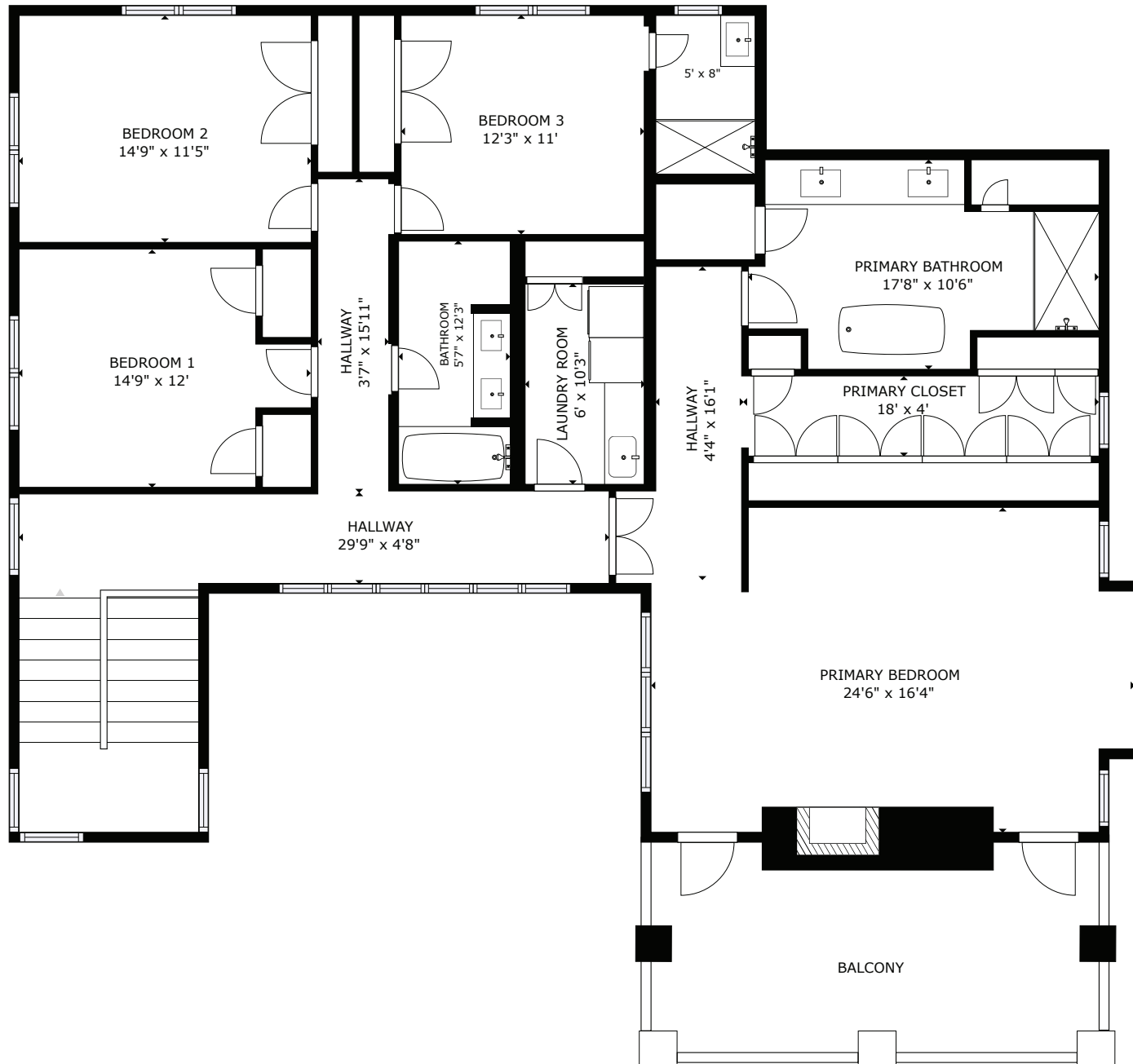


MEASUREMENT ARE APPROXIMATE, ACTUALS MAY VARY. MEASUREMENTS MAY INCLUDE NON-CONFORMING SPACE.



# 6677 CRABAPPLE DRIVE

## UPPER FLOOR



MEASUREMENT ARE APPROXIMATE, ACTUALS MAY VARY. MEASUREMENTS MAY INCLUDE NON-CONFORMING SPACE.