

20 AT NATURE'S DOOR



SKI-IN/SKI-OUT
RESIDENCE

3.5
BEDROOMS

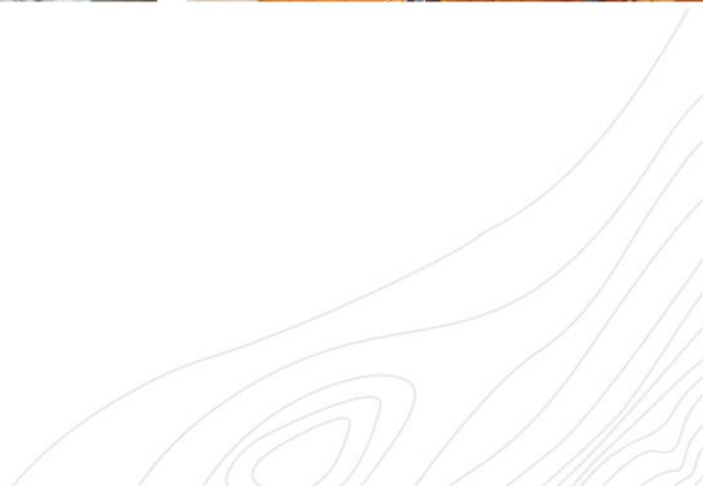
4
BATHROOMS

2,518 SQ.FT.
RESIDENCE

ULTIMATE MOUNTAIN RESIDENCE



Ideally positioned only steps from the Dave Murray Downhill ski run, enjoy elevated views from the exclusive At Nature's Door complex. This ski in/ ski out residence offers a well-appointed fully furnished layout over three floors with ample space to host family and friends featuring 3 bedrooms plus media room/den. Enjoy all day sunshine from this south facing home with views up to the peak of Whistler Mountain. Relax after a day of mountain adventures in your private hot tub or unwind in front of the floor to ceiling fireplace. Take advantage of this unique offering of full ownership while enjoying the benefits of Fairmont Heritage Place, allowing you to have all the amenities of a luxury hotel including a spa, outdoor pool & hot tub, gym, sauna, steam room, concierge, clubhouse and more! Completing this home is a large double garage, offering ample storage for all your Whistler gear. No GST.



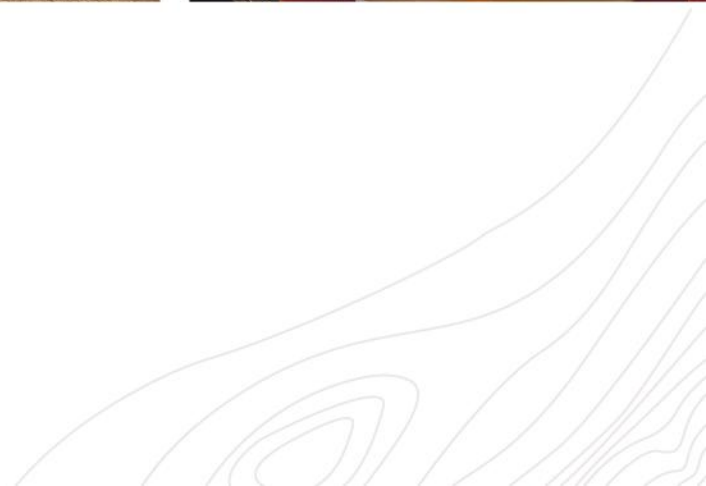


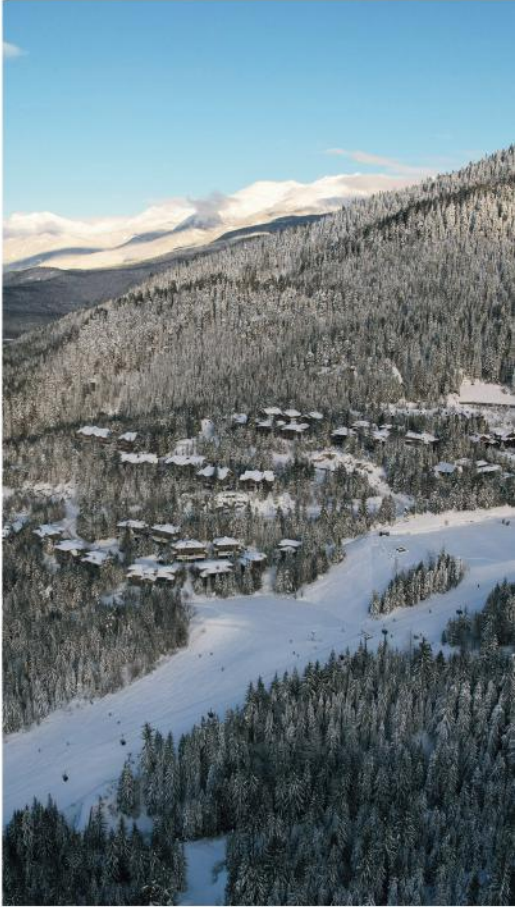
HOT TUB WITH VIEWS

ELEVATED MOUNTAIN VIEWS

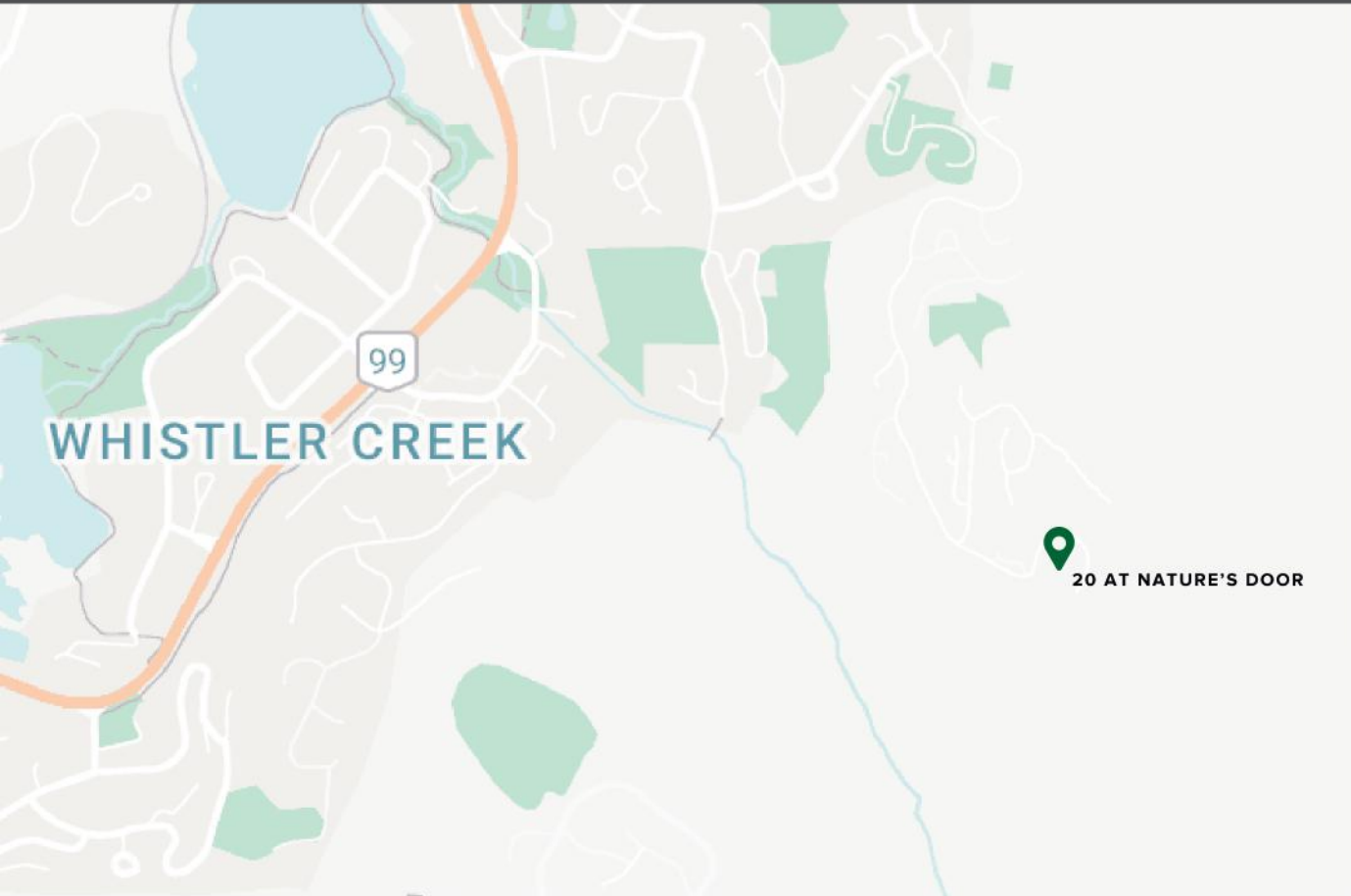


POOL AND SPA ACCESS





ACCESS TO ALL



SKI ACCESS

Located just steps from ski-in-ski-out trails.



MOUNTAIN VIEWS

Elevated south facing mountain views.



EXCLUSIVE COMPLEX

Enjoy the amenities of a luxury hotel including spa, outdoor pool & hot tub, gym sauna, clubhouse and more!

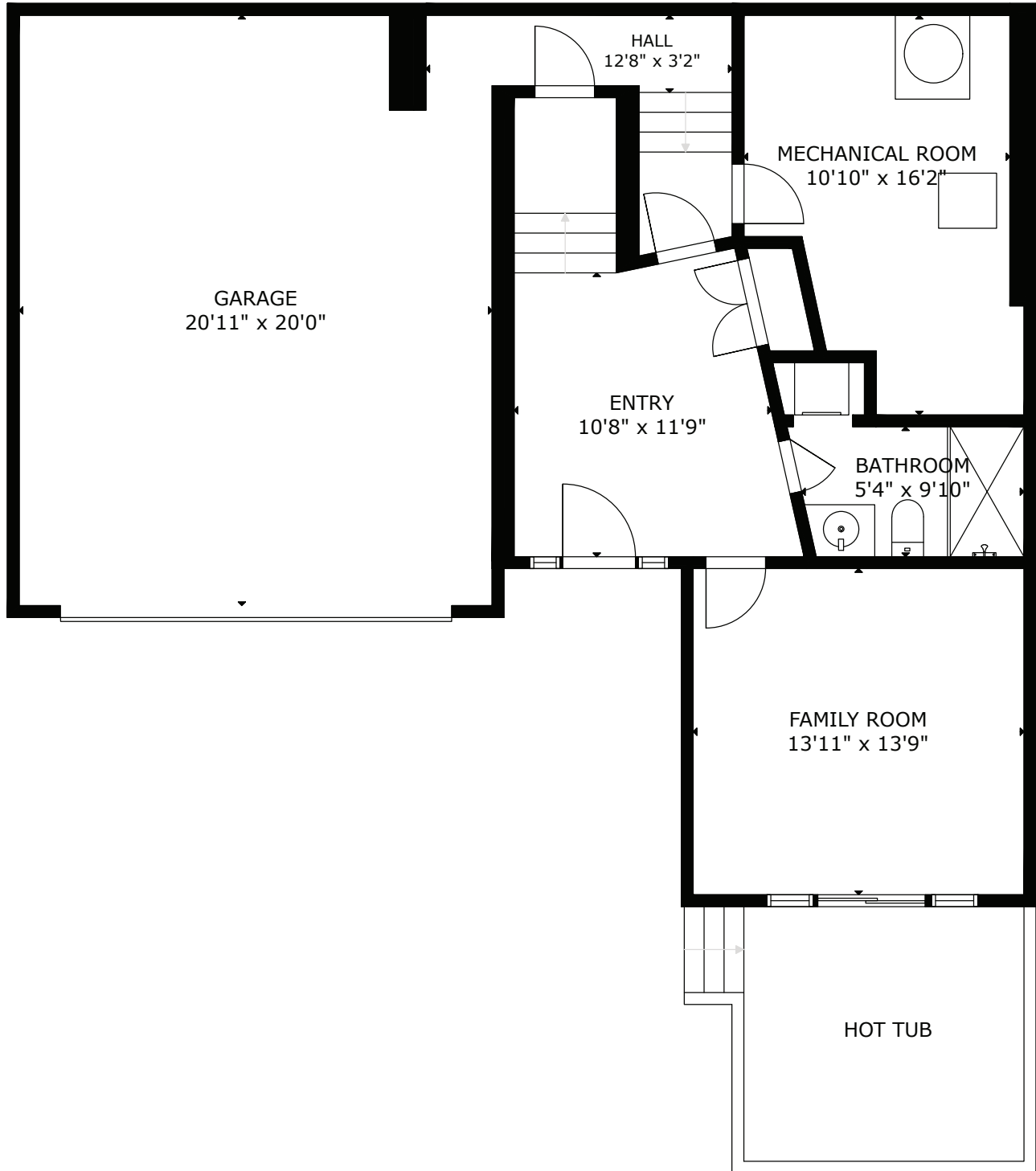


CLOSE TO CREEKSIDE

Access more with close proximity to shops & restaurants that Creekside Village has to offer.

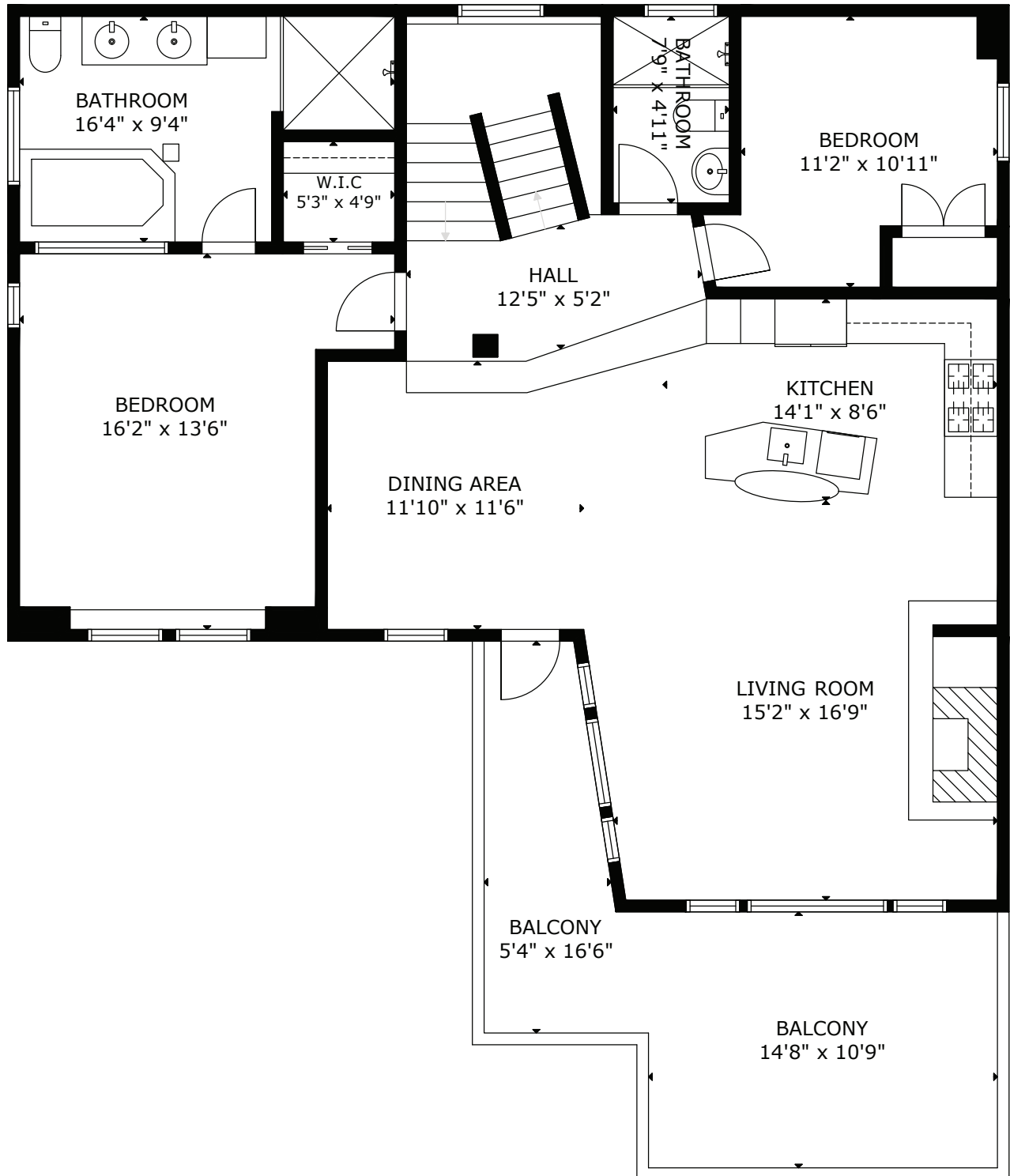
20 AT NATURE'S DOOR

LOWER FLOOR



20 AT NATURE'S DOOR

MAIN FLOOR



20 AT NATURE'S DOOR

UPPER FLOOR

