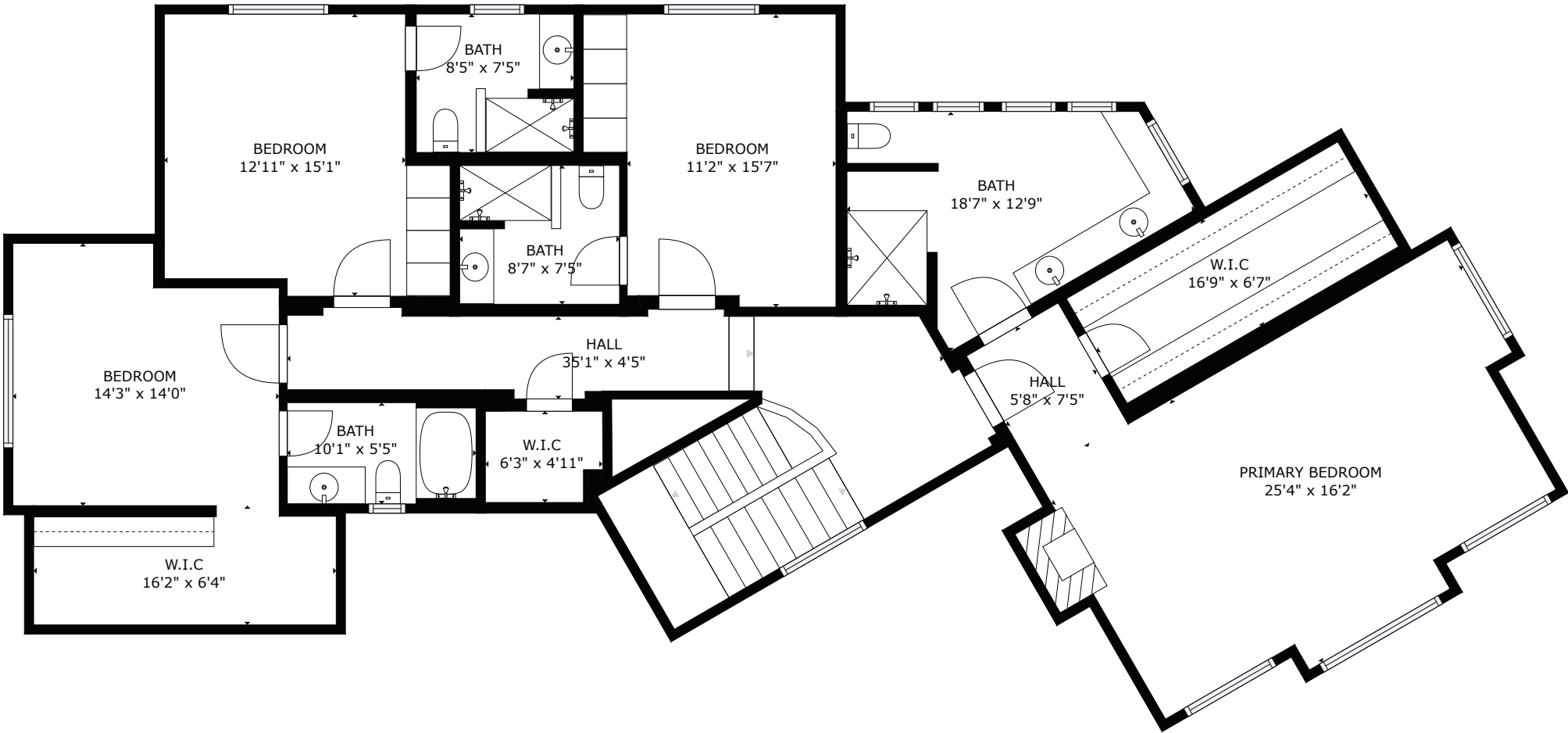


TREETOP LANE ESTATE

UPPER FLOOR



TOTAL: 11,320 SQ.FT.

LOWER FLOOR: 5,007 SQ.FT., MAIN FLOOR: 4,206 SQ.FT., UPPER FLOOR: 2,022 SQ.FT.

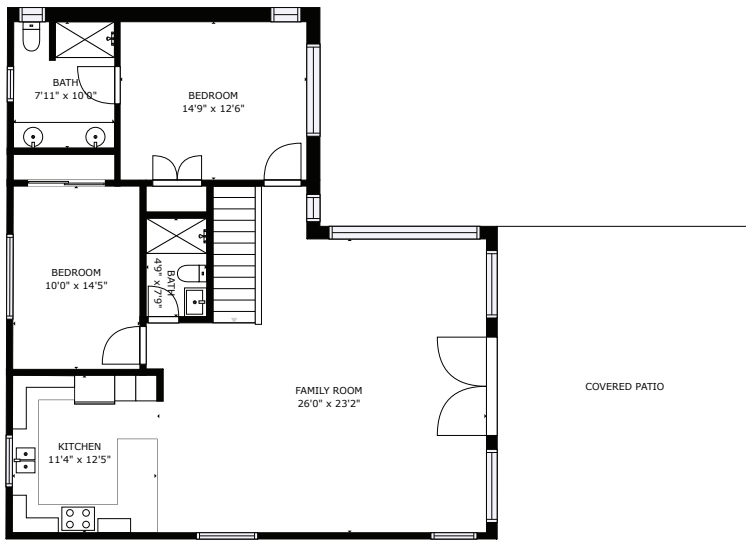
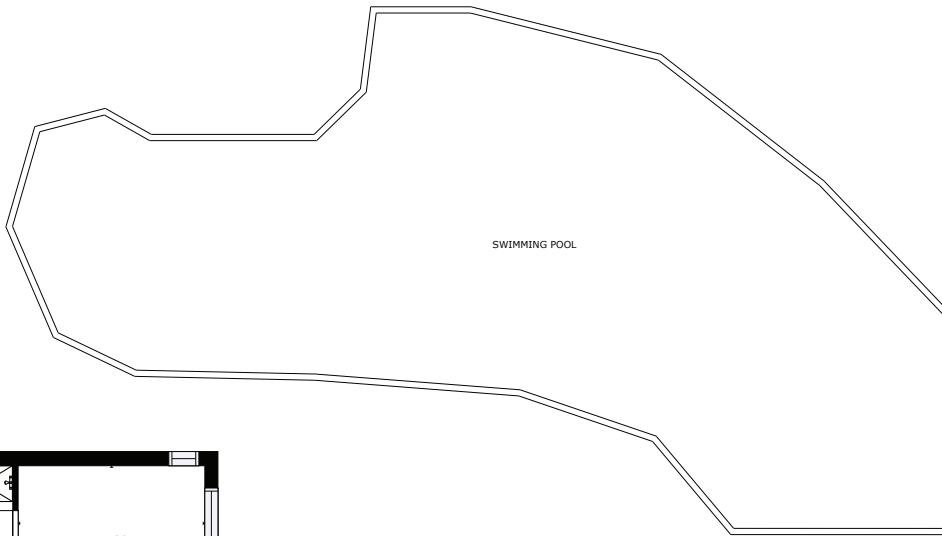
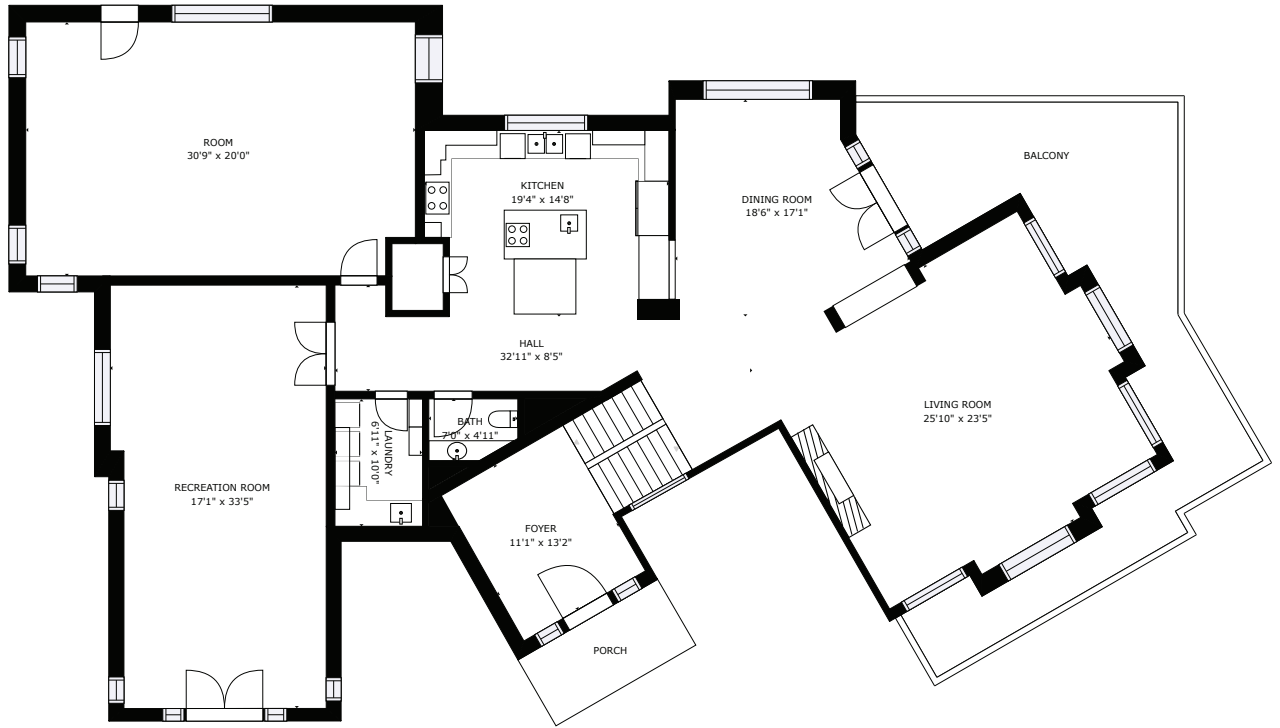
EXCLUDED AREAS

PATIO: 1,079 SQ.FT., PORCH: 430 SQ.FT., BALCONY: 484 SQ.FT., GARAGE: 1,107 SQ.FT.

MEASUREMENT ARE APPROXIMATE, ACTUALS MAY VARY. MEASUREMENTS MAY INCLUDE NON-CONFORMING SPACE.

TREETOP LANE ESTATE

MAIN FLOOR



TOTAL: 11,320 SQ.FT.

LOWER FLOOR: 5,007 SQ.FT., MAIN FLOOR: 4,206 SQ.FT., UPPER FLOOR: 2,022 SQ.FT.

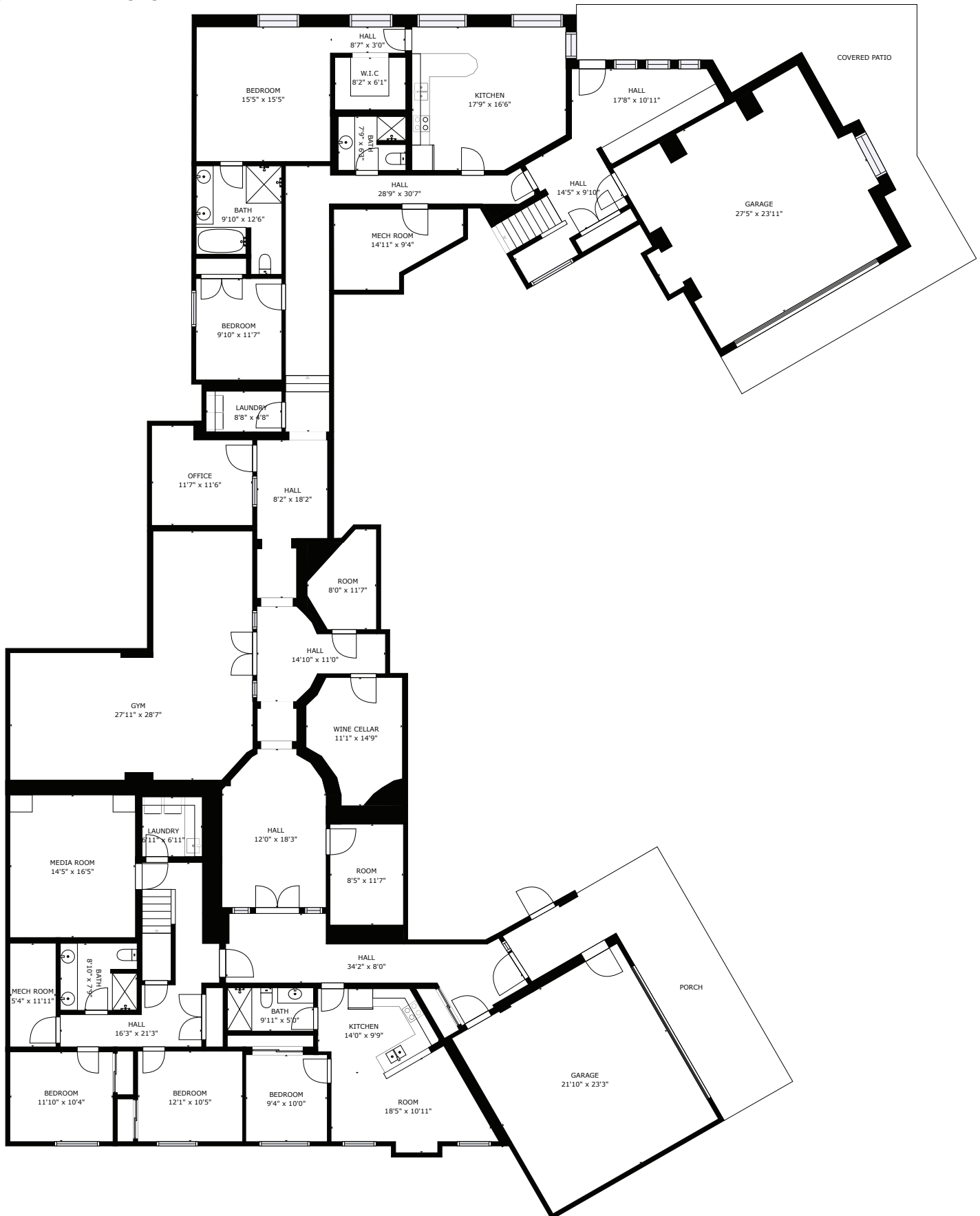
EXCLUDED AREAS

PATIO: 1,079 SQ.FT., PORCH: 430 SQ.FT., BALCONY: 484 SQ.FT., GARAGE: 1,107 SQ.FT.

TREETOP LANE ESTATE

CREATED BY EPIC SEA TO SKY HOMES

LOWER FLOOR



TOTAL: 11,320 SQ.FT.

LOWER FLOOR: 5,007 SQ.FT., MAIN FLOOR: 4,206 SQ.FT., UPPER FLOOR: 2,022 SQ.FT.

EXCLUDED AREAS

PATIO: 1,079 SQ.FT., PORCH: 430 SQ.FT., BALCONY: 484 SQ.FT., GARAGE: 1,107 SQ.FT.